

MEDIAEDGE-SWT4

Installation Guide

MEDIAEDGE-SWT4

Installation Guide

June 24, 2009

Copyright © 2005 - 2009 Thomson.

All rights reserved.

■ Notice to Reader

Thomson Grass Valley makes no warranty of any kind with regard to this material, including, but not limited to, the implied warranties of merchantability and fitness for a particular purpose. Thomson Grass Valley shall not be liable for errors contained herein or for incidental consequential damages in connection with the furnishing, performance, or use of this material.

This document contains proprietary information which is protected by copyright. All rights are reserved. No part of this document may be photocopied, reproduced or translated into another language without the prior written consent of Thomson Grass Valley.

The information in this document is subject to change without notice.



Product Notes

Please observe the following cautions when using this product.

1. Unauthorized copying of a portion or the entirety of this product is prohibited.
2. The description and specifications of this product are subject to future change without notice.
3. The description of this product has been prepared to as complete as possible. Please contact Thomson Grass Valley regarding any questionable points, errors or omissions.
4. The company assumes no liability for the results of practical application, regardless of item (3) above.
5. Regardless of whether negligence occurs during usage, the company assumes no liability, even if there is a claim, for extraordinary, incidental or derivative loss, including the loss of profits, that arise during practical application of this product.
6. The analysis, reverse engineering, decompiling and disassembling of the software, hardware or manuals that accompany this product, and all other related products including miscellaneous supplemental items, are prohibited.
7. MEDIAEDGE, MEDIAEDGE-SWT4, MEDIAEDGE-DAS4 are trademarks of Thomson Canopus Co., Ltd.
8. Windows and ActiveX are registered trademarks of the Microsoft Corporation in the US. Other product names and related items are trademarks or registered trademarks of their respective companies.



Warranty

THOMSON GRASS VALLEY IS NOT RESPONSIBLE FOR ANY LOST PROFITS, LOST SAVINGS OR OTHER INCIDENTAL OR CONSEQUENTIAL DAMAGES ARISING OUT OF THE USE OF, OR INABILITY TO USE, THIS PRODUCT. THIS INCLUDES DAMAGE TO PROPERTY AND, TO THE EXTENT PERMITTED BY LAW, DAMAGES FOR PERSONAL INJURY. THIS WARRANTY IS IN LIEU OF ALL OTHER WARRANTIES OF MERCHANTABILITY AND FITNESS FOR A PARTICULAR PURPOSE.

Table of Contents

Chapter 1 - Introduction

1 Introduction.....	2
1-1 License Agreement	2
1-2 Notes regarding usage.....	2
1-3 Verify package contents	3
1-4 GNU General Public License.....	4
2 Operating environment.....	5
2-1 System requirements	5
2-2 Supported OS	6
2-3 Website	6
2-4 Online user registration.....	6

Chapter 2 - Installation

1 Overview	8
2 Installation	10
2-1 Installing MEDIAEDGE-SWT4.....	10
2-2 Installing MEDIAEDGE-DAS4	14
3 Uninstall.....	18
3-1 Uninstalling MEDIAEDGE-SWT4	18
3-2 Uninstalling MEDIAEDGE-DAS4.....	19

Chapter 3 - MEDIAEDGE-SWT4(Dongle Authentication Model)

1 Using MEDIAEDGE-SWT4	22
1-1 MEDIAEDGE Server Setup	22
2-2 Starting MEDIAEDGE-SWT4	23

Chapter 4 - Appendix

1 Supported Format and Limitation	26
2 Troubleshooting.....	27
3 GPL License	28



MEDIAEDGE

Chapter 1 - Introduction



1

This chapter describes the MEDIAEDGE-SWT4.

- Introduction
- Operating environment

1 Introduction

1-1 License Agreement

Thank you for purchasing the MEDIAEDGE-SWT4. To use the software that accompanies this product, you must first consent to the terms of this License Agreement.

Consent to the terms of this Software License Agreement is considered granted upon opening the software envelope.

1-2 Notes regarding usage

Regardless of whether negligence occurs during usage, the company assumes no liability, even if there is a claim, for extraordinary, incidental or derivative loss, including the loss of profits, that arise during practical application of this product.

Operation of this product is not guaranteed for use other than the original intended use, nor is operation guaranteed in an environment different from the one provided by this company.

Operation of this product is not guaranteed if used with a CPU or devices other than those which have been rated.

Please note the following points when recording copyrighted works of others (e.g. video and audio recorded in media such as CD, DVD and video program, or acquired through radio/TV broadcast or Internet transmission) by use of this product.

- Subject to copyright, reproduction or editing of the copyrighted work may infringe copyright except as such reproduction is intended for personal or home use. Reproduction and editing requires permission from the author or the copyright holder through the right holder, broadcaster, sender, seller or the group of right holders which is indicated on the recording media or otherwise.
- Transfer or transmission, via the Internet or otherwise (inclusive of incorporation into the user's own web page), of media in which copyrighted works of others are reproduced or edited and then fixed without permission, regardless of whether or not compensation is received, constitutes an infringement of copyright.
- Please note that Thomson Grass Valley is not liable for the copyrighted works or their reproductions, which are created, reproduced or edited by use of this product.

1-3 Verify package contents

Please verify that the following components are included in the MEDIAEDGE-SWT4 package. Components of MEDIAEDGE-SWT4(Dongle Authentication Model) and MEDIAEDGE-SWT4(Server Authentication Model) are as follows. Product packaging is implemented with stringent quality assurance measures.

■ MEDIAEDGE-SWT4(Dongle Authentication Model) Package Contents

- Dongle (Hardware protect key)
MEDIAEDGE-SWT4(Dongle Authentication Model) requires the use of a hardware protect key called a dongle.
Insert this dongle into the Client PC with MEDIAEDGE-SWT4 installed.
- CD-ROM
 - MEDIAEDGE-SWT4 Installation CD
Delivered are applications such as one to view, on the personal computer, video contents distributed from the stream server.
- Manual
MEDIAEDGE-SWT4 Installation Guide(this one)
- License Agreement

■ MEDIAEDGE-SWT4(Server Authentication Model) Package Contents

- Dongle (Hardware protect key)
MEDIAEDGE-SWT4(Server Authentication Model) requires the use of a USB key called a dongle.
Insert this dongle into the Server with MEDIAEDGE-DAS4 installed.
- CD-ROMs
 - MEDIAEDGE-SWT4 Installation CD
Delivered are applications such as one to view, on the personal computer, video contents distributed from the stream server.
 - MEDIAEDGE-DAS4 Application CD
Delivered are applications such as one to act as an authentication server for license management of MEDIAEDGE-SWT4.

- Manual
MEDIAEDGE-SWT4 Installation Guide(this one)
- License Agreement

1-4 GNU General Public License

This product utilizes free software that uses GNU General Public License (hereinafter "GPL") or GNU Lesser General Public License (hereinafter "LGPL") in a part of the software. The following articles are applied to each free software (hereinafter "this program") that uses GPL.

This program is free software; you can redistribute it and/or modify it under the terms of the GNU General Public License as published by the Free Software Foundation; either version 2 of the License, or (at your option) any later version.

This program is distributed in the hope that it will be useful, but WITHOUT ANY WARRANTY; without even the implied warranty of MERCHANTABILITY or FITNESS FOR A PARTICULAR PURPOSE. See the GNU General Public License for more details.

You should have received a copy of the GNU General Public License along with this program; if not, write to the Free Software Foundation, Inc., 59 Temple Place, Suite 330, Boston, MA 02111-1307 USA.

2 Operating environment

2-1 System requirements

Installing and running MEDIAEDGE-SWT4 requires the following environment. However, having a computer that satisfies all of the following conditions does not guarantee that your MEDIAEDGE-SWT4 will operate.

- MEDIAEDGE-SWT4 Dongle Authentication Model), MEDIAEDGE-SWT4 (Server Authentication Model) server minimum requirements
 - Thomson Grass Valley digital signage software “Display Content Manager” or Thomson Grass Valley server software “MEDIAEDGE-SVS4” is required to be installed.
- MEDIAEDGE-SWT4(Dongle Authentication Model), MEDIAEDGE-SWT4(Server Authentication Model) client minimum requirements
 - Intel Pentium 4 3.2 GHz or higher CPU
 - 256 MB RAM or more
 - Network Interface Card (100 Base-TX)
 - Sound card
 - Graphics card with YUV overlay support
 - CD-ROM drive (for installation)
 - USB port (to set Dongle)
 - * Not required when the license is identified through the License Server Service of MEDIAEDGE-SWT4(Server Authentication Model).
 - Operations with Internet Explorer 6 or later are recommended.
- MEDIAEDGE-SWT4(Server Authentication Model) license server minimum requirements
 - Intel Pentium III 550 MHz or higher CPU
 - 256 MB RAM or more
 - Network Interface Card (100 Base-TX)
 - CD-ROM drive (for installation)
 - USB port (to set Dongle)

2-2 Supported OS

- MEDIAEDGE-SWT4(Dongle Authentication Model), MEDIAEDGE-SWT4(Server Authentication Model) clients
 - Microsoft Windows XP Professional (Service Pack 3 or later)
 - Microsoft Windows Vista Buisness/Ultimate/Enterprise (Service Pack 1 or later)

- MEDIAEDGE-SWT4 License Server
 - Microsoft Windows Server 2008

2-3 Website

Including MEDIAEDGE, the latest company information is announced at our web-site:
<http://desktop.grassvalley.com/>

The latest drivers utilities, product manuals, FAQs, etc. are also available at our website.

2-4 Online user registration

You can register your MEDIAEDGE here.

<http://desktop.grassvalley.com/support/>

Chapter 2 - Installation



2

This chapter describes the installation of your MEDIAEDGE-SWT4 applications.

- Overview
- Installation
- Uninstall

1 Overview

MEDIAEDGE-SWT4 is a software to view video contents delivered by MEDIAEDGE server on PC. The software supports contents MPEG1/2, H.264 or mov format.

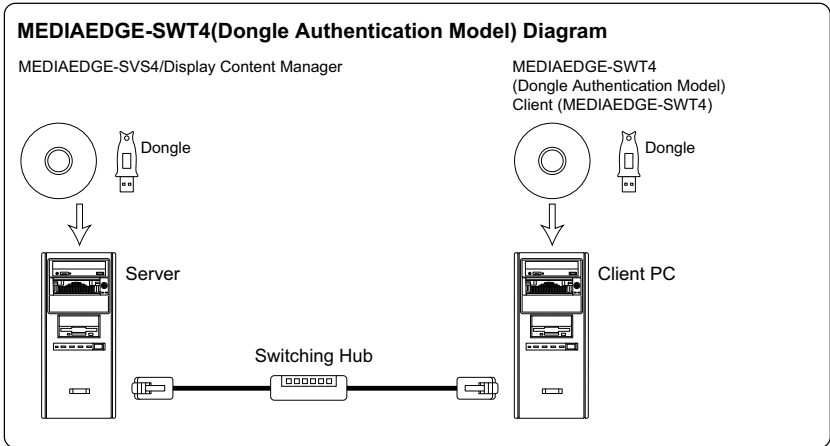
Also, as layout contents are available to display on the PC, you can use the MEDIAEDGE-SWT4 to display contents such as movie, still picture, HTM file, or ticker.

MEDIAEDGE-DAS4 is a software client License Server for use with MEDIAEDGE-SWT4. Maximum number of software clients which is able to simultaneously connect is configured in the MEDIAEDGE-DAS4 dongle. It is required that the MEDIAEDGE-DAS4 is installed on the PC where the MEDIAEDGE-SVS4 or the Display Content Manager is installed.

● MEDIAEDGE-SWT4(Dongle Authentication Model)

In this version, the license is identified using a dongle.

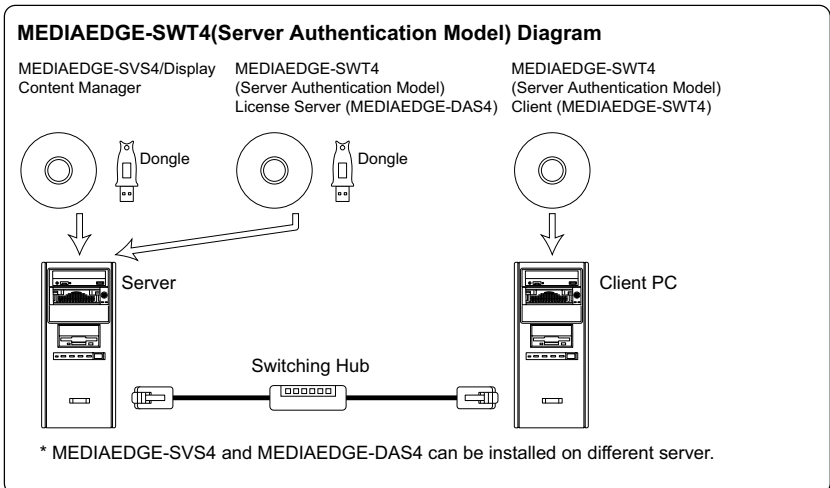
* Insert the dongle in the client PC.



● MEDIAEDGE-SWT4(Server Authentication Model)

In this version, the licence is identified using a license server (hereafter shown as MEDIAEDGE-DAS4).

* Insert the dongle in the server.



2 Installation

2-1 Installing MEDIAEDGE-SWT4

This section describes the procedures to install the MEDIAEDGE-SWT4. Follow the instructions below to install the software.

* Do not install MEDIAEDGE-SWT4 on the PC where MEDIAEDGE-SVS4 or Display Content Manager is installed.

MEDIAEDGE-SWT4 performs license verification using either a dongle or MEDIAEDGE-DAS4 license server. In order to perform license verification, MEDIAEDGE-DAS4 must be installed on a server on the same network as MEDIAEDGE-SWT4. Refer to p.14, "Installing MEDIAEDGE-DAS4" for details.

■ Installation

Log on using an ID with authority to change the system settings (Administrator).

In addition, close all currently running applications before starting installation.

Caution:

The dongle will not be detected if installation is performed with the dongle already inserted. Be sure to insert the dongle when prompted during dongle driver installation.

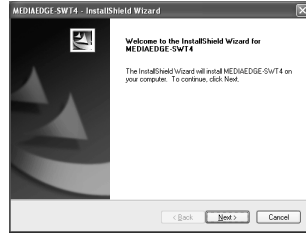
1 -----
 Insert "MEDIAEDGE-SWT4 Installation CD" into CD-ROM drive.

2 -----
 The CD-ROM will start automatically and MEDIAEDGE-SWT4 setup program will start.

If it does not start automatically, start Explorer by selecting [Start] > [All Programs] > [Accessories] > [Explorer]. Browse to the CD-ROM drive. Open "SWT4" folder and double click "setup.exe".

3

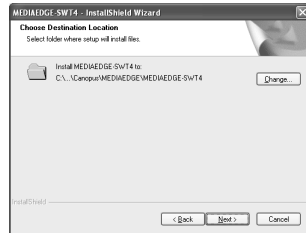
Click [Next].



4

Click [Next].

If you need to change the installation folder, click [Browse] and either select a folder or directly enter a folder name.

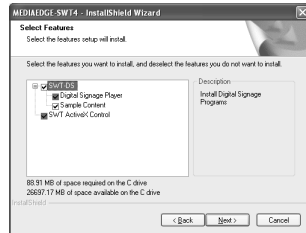


5

Choose the features to install, and click [Next].

* If you don't want to install the digital signage application, uncheck [SWT-DS]. When [SWT-DS] is unchecked, the installer only installs the ActiveX Control without installing the MEDIAEDGE-SWT4 application.

* If you don't want to install the sample contents, uncheck [Sample Content]. When [Sample Content] is unchecked, the sample contents will not be displayed at the startup of the MEDIAEDGE-SWT4.



6

Choose the hard disk drive to make the shared folder and click [Next].

Insert the dongle into a USB port if using MEDIAEDGE-SWT4(D).

* Do not insert MEDIAEDGE-DAS4 dongle when using MEDIAEDGE-SWT4(S).



7

Enter the host name of the MEDIAEDGE server.



8

Enter the host name and the port number of the license server (MEDIAEDGE-DAS4).



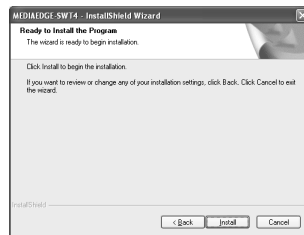
9

Specify if MEDIAEDGE-SWT4 is added to startup.



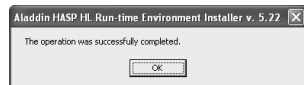
10

Specify if MEDIAEDGE-SWT4 is added to startup.



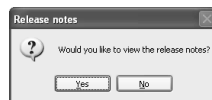
11

Click [OK].

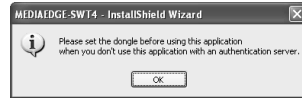


12

Click [Yes].
Release Notes contain information that are not included in the manual. Be sure to read the Release Notes following installation.



13 Click [OK].



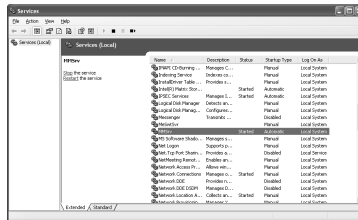
14 Click [Finish].
This completes MediaEdge-SWT4 installation.



■ MeSwtSvr Confirmation

Open [Control Panel] > [Administrative Tools] > [Services]. Confirm that SwtSvr is started. If it is not started, check the following, and try to re-start SwtSvr.

* If [SWT-DS] is unchecked at the Step 5 on the previous page, set the MeSwtSvr status [Start].



● MEDIAEDGE-SWT4 (MeSwtSvr) provides service via IP port number is 554. If it is used by other applications, exit those applications. software.

2-2 Installing MEDIAEDGE-DAS4

*MEDIAEDGE-SWT4(Server Authentication Model) only
 MEDIAEDGE-DAS4 is a license server for MEDIAEDGE-SWT4/SWT2, and manages the maximum number of software clients which is able to simultaneously connect. The number of simultaneous software clients is programmed into MEDIAEDGE-DAS4 USB dongle.

* MEDIAEDGE-DAS4 is not required to be installed on the same server as MEDIAEDGE-SVS4.

■ Installation

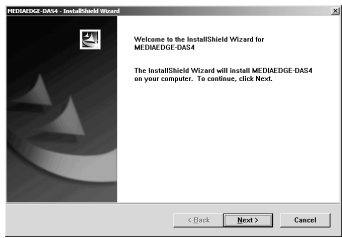
Log on using an ID with authority to change the system settings (Administrator). In addition, close all currently running applications before starting installation.

Caution:
 The dongle will not be detected if installation is performed with the dongle already inserted. Be sure to insert the dongle when prompted by the message during dongle driver installation.

1 -----
 Insert "MEDIAEDGE-DAS4 Application CD" into the CD-ROM drive.

2 -----
 The CD-ROM will start automatically and MEDIAEDGE-DAS4 setup program will start.
 If it does not start automatically, start Explorer by selecting [Start] > [All Programs] > [Accessories] > [Explorer]). Browse to the CD-ROM drive. Open the "DAS4" folder and double click "setup.exe".

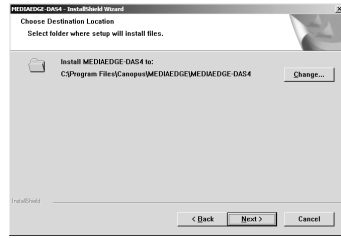
3 -----
 Click [Next].



4

Click [Next].

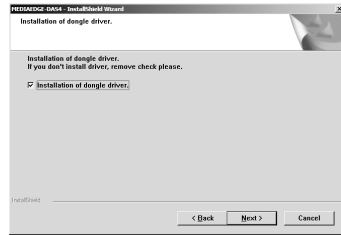
If you need to change the installation folder, click [Browse] and either select a folder or directly enter a folder name.



5

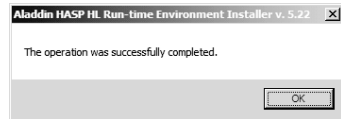
Confirm [Installation of dongle driver.] checkbox is checked, and click [Next].

For environments with the dongle driver already installed (ie. MEDIAEDGE-SVS4 are installed), uncheck the checkbox.



6

Click [OK].



7

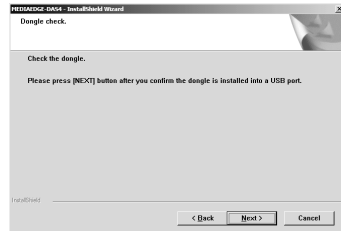
Insert the dongle into a USB port and click [OK].

- Insert the dongle after the dongle driver has finished copying.
- The driver will be automatically installed by Plug&Play after inserting the dongle.

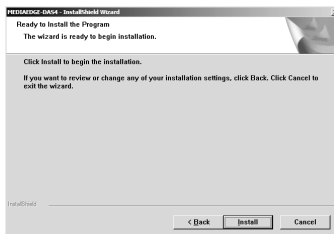


8

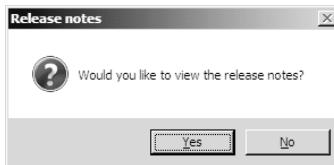
Click [Next].



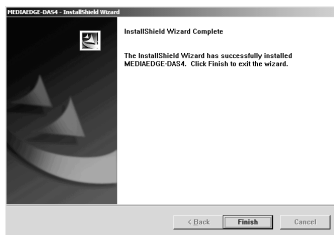
11 Click [Install].



10 Click [Yes].
Release Notes contain information are not included in the manual. Be sure to read the Release Notes following installation.

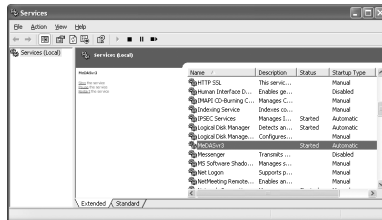


11 Click [Finish].
This completes MEDIAEDGE-DAS4 installation.



■ MEDIAEDGE-DAS4 Confirmation

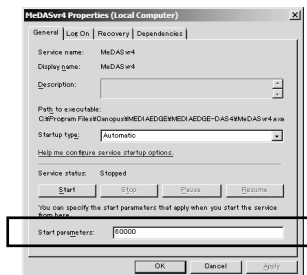
Open [Control Panel] > [Administrative Tools] > [Services]. Confirm that MeDASvr4 is started. If it is not started, check the following, and try to re-start MeDASvr4.



- If MEDIAEDGE-DAS4 dongle is inserted and the dongle LED is not lit, remove and re-insert the dongle. If it still is not recognized, un-install and re-install this software.
- MEDIAEDGE-DAS4 provides service via IP port number 51003. Change this port number if it is used by other applications. When changing the port number, it is also necessary to change MEDIAEDGE-SWT4 menu page.

Complete the following to change the License Server port number.

1. Open [Control Panel] > [Administrative Tools] > [Services].
2. Select MeDASvr4 and open [Properties].
3. Click [Stop] if the service status does not appear as “Stopped”.
4. Specify the port number (-port + number) in Start parameters.
Example: Port number 60000 is specified as shown below.



5. Click [Start] to begin service.
If a failure occurs, please recheck all system settings.

3 Uninstall

3-1 Uninstalling MEDIAEDGE-SWT4

When updating MEDIAEDGE-SWT4, uninstall the old version before installing new application.

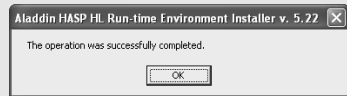
- 1 From the [Start] menu, click [Computer] > [Uninstall or change a program] and choose [MEDIAEDGE-SWT4] > [Uninstall].

* For Windows XP, Choose [Control Panel] > [Add/Remove Programs] > [MEDIAEDGE-SWT4] and click [Remove].

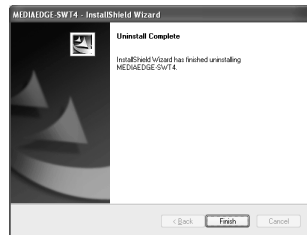
- 2 Click [Yes].



The screen shown on the right may appear. Click [OK].



- 3 Click [Finish].

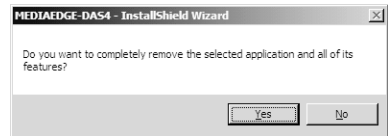


3-2 Uninstalling MEDIAEDGE-DAS4

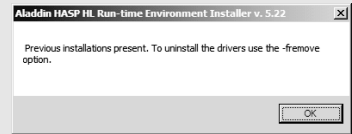
When updating MEDIAEDGE-DAS4, uninstall the old version before installing new application.

- 1 From the [Start] menu, click [Computer] > [Uninstall or change a program] and choose [MEDIAEDGE-DAS4] >[Uninstall].

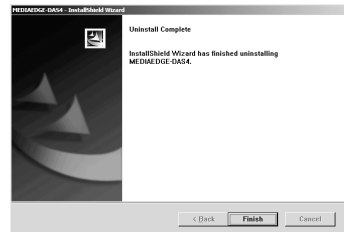
- 2 Click [Yes].



The screen shown on the right may appear. Click [OK].



- 3 Click [Finish].



MEDIAEDGE

Chapter 3 - MEDIAEDGE-SWT4(Dongle Authentication Model)

3

This chapter explains MEDIAEDGE-SWT4(Dongle Authentication Model) startup and basic operation.

- Using MEDIAEDGE-SWT4

2-2 Starting MEDIAEDGE-SWT4

- Check Ethernet Connection

Confirm the server, switching hub, and client PC with MEDIAEDGE-SWT4 installed are connected. Confirm Ethernet cable is properly inserted into the corresponding ports.

- Check the Dongle

Confirm the dongle is inserted in the PC USB port.

- 1 -----
From [Start] menu, choose [All programs] > [Canopus] > [MEDIAEDGE-SWT4] > [MEDIAEDGE-SWT4-DS].
→ The MEDIAEDGE-SWT4 DS starts up.
* When [Sample Content] is checked during the MEDIAEDGE-SWT4 installation, the sample content is played when the MEDIAEDGE-SWT4 DS starts up.
- 2 -----
To exit the MEDIAEDGE-SWT4 DS, click the [Esc] key on the keyboard.

Chapter 4 - Appendix



4

- Supported Format
- Troubleshooting
- GPL License

1 Supported Format and Limitation

MediaEdge-SWT4 supports following formats:

■ Supported Format

- Video

- MPEG2-HD

- MPEG1

- MPEG2

- H.264

- QuickTime movie

- Still image

- JPEG

- BMP

- GIF (transparent GIF supported)

- PNG (transparent PNG supported)

- Audio

- WAVE (PCM)

- MP3

- Others

- Ticker (Text/RSS)

- HTML

- * On the PC where FLASH can be played, FLASH is available as a content to display.

■ Limitations

- Maximum number of contents that can be played simultaneously

- Video: 4, Still Image: 16, Ticker: 2, FLASH: 4, Audio: 4

2 Troubleshooting

Status Code	Reason
The image is distorted. The screen is black and there is no playback.	There may be various burdens on the CPU of the client PC running MediaEdge-SWT3 preventing it from decoding normally. Be careful when playing HD video, enabling FEC, and receiving multiple streams.

3 GPL License

GNU GENERAL PUBLIC LICENSE Version 2, June 1991

Copyright (C) 1989, 1991 Free Software Foundation, Inc.

51 Franklin St, Fifth Floor, Boston, MA 02110-1301 USA

Everyone is permitted to copy and distribute verbatim copies of this license document, but changing it is not allowed.

Preamble

The licenses for most software are designed to take away your freedom to share and change it. By contrast, the GNU General Public License is intended to guarantee your freedom to share and change free software—to make sure the software is free for all its users. This General Public License applies to most of the Free Software Foundation's software and to any other program whose authors commit to using it. (Some other Free Software Foundation software is covered by the GNU Library General Public License instead.) You can apply it to your programs, too.

When we speak of free software, we are referring to freedom, not price. Our General Public Licenses are designed to make sure that you have the freedom to distribute copies of free software (and charge for this service if you wish), that you receive source code or can get it if you want it, that you can change the software or use pieces of it in new free programs; and that you know you can do these things.

To protect your rights, we need to make restrictions that forbid anyone to deny you these rights or to ask you to surrender the rights. These restrictions translate to certain responsibilities for you if you distribute copies of the software, or if you modify it.

For example, if you distribute copies of such a program, whether gratis or for a fee, you must give the recipients all the rights that you have. You must make sure that they, too, receive or can get the source code. And you must show them these terms so they know their rights.

We protect your rights with two steps: (1) copyright the software, and (2) offer you this license which gives you legal permission to copy, distribute and/or modify the software.

Also, for each author's protection and ours, we want to make certain that everyone understands that there is no warranty for this free software. If the software is modified by someone else and passed on, we want its recipients to know that what they have is not the original, so that any problems introduced by others will not reflect on the original authors' reputations.

Finally, any free program is threatened constantly by software patents. We wish to avoid the danger that redistributors of a free program will individually obtain patent licenses, in effect making the program proprietary. To prevent this, we have made it clear that any patent must be licensed for everyone's free use or not licensed at all.

The precise terms and conditions for copying, distribution and modification follow.

GNU GENERAL PUBLIC LICENSE TERMS AND CONDITIONS FOR COPYING, DISTRIBUTION AND MODIFICATION

0. This License applies to any program or other work which contains a notice placed by the copyright holder saying it may be distributed under the terms of this General Public License. The "Program", below, refers to any such program or work, and a "work based on the Program" means either the Program or any derivative work under copyright law: that is to say, a work containing the Program or a portion of it, either verbatim or with modifications and/or translated into another language. (Hereinafter, translation is included

without limitation in the term "modification".) Each licensee is addressed as "you".

Activities other than copying, distribution and modification are not covered by this License; they are outside its scope. The act of running the Program is not restricted, and the output from the Program is covered only if its contents constitute a work based on the Program (independent of having been made by running the Program). Whether that is true depends on what the Program does.

1. You may copy and distribute verbatim copies of the Program's source code as you receive it, in any medium, provided that you conspicuously and appropriately publish on each copy an appropriate copyright notice and disclaimer of warranty; keep intact all the notices that refer to this License and to the absence of any warranty; and give any other recipients of the Program a copy of this License along with the Program.

You may charge a fee for the physical act of transferring a copy, and you may at your option offer warranty protection in exchange for a fee.

2. You may modify your copy or copies of the Program or any portion of it, thus forming a work based on the Program, and copy and distribute such modifications or work under the terms of Section 1 above, provided that you also meet all of these conditions:

a) You must cause the modified files to carry prominent notices stating that you changed the files and the date of any change.

b) You must cause any work that you distribute or publish, that in whole or in part contains or is derived from the Program or any part thereof, to be licensed as a whole at no charge to all third parties under the terms of this License.

c) If the modified program normally reads commands interactively when run, you must cause it, when started running for such interactive use in the most ordinary way, to print or display an announcement including an appropriate copyright notice and a notice that there is no warranty (or else, saying that you provide a warranty) and that users may redistribute the program under these conditions, and telling the user how to view a copy of this License. (Exception: if the Program itself is interactive but does not normally print such an announcement, your work based on the Program is not required to print an announcement.)

These requirements apply to the modified work as a whole. If identifiable sections of that work are not derived from the Program, and can be reasonably considered independent and separate works in themselves, then this License, and its terms, do not apply to those sections when you distribute them as separate works. But when you distribute the same sections as part of a whole which is a work based on the Program, the distribution of the whole must be on the terms of this License, whose permissions for other licensees extend to the entire whole, and thus to each and every part regardless of who wrote it.

Thus, it is not the intent of this section to claim rights or contest your rights to work written entirely by you; rather, the intent is to exercise the right to control the distribution of derivative or collective works based on the Program.

In addition, mere aggregation of another work not based on the Program with the Program (or with a work based on the Program) on a volume of a storage or distribution medium does not bring the other work under the scope of this License.

3. You may copy and distribute the Program (or a work based on it, under Section 2) in object code or executable form under the terms of Sections 1 and 2 above provided that you also do one of the following:

a) Accompany it with the complete corresponding machine-readable source code, which must be distributed under the terms of Sections 1 and 2 above on a medium customarily used for software interchange; or,

b) Accompany it with a written offer, valid for at least three years, to give any third party, for a charge no more than your cost of physically performing source distribution, a complete machine-readable

copy of the corresponding source code, to be distributed under the terms of Sections 1 and 2 above on a medium customarily used for software interchange; or,

c) Accompany it with the information you received as to the offer to distribute corresponding source code. (This alternative is allowed only for noncommercial distribution and only if you received the program in object code or executable form with such an offer, in accord with Subsection b above.)

The source code for a work means the preferred form of the work for making modifications to it. For an executable work, complete source code means all the source code for all modules it contains, plus any associated interface definition files, plus the scripts used to control compilation and installation of the executable. However, as a special exception, the source code distributed need not include anything that is normally distributed (in either source or binary form) with the major components (compiler, kernel, and so on) of the operating system on which the executable runs, unless that component itself accompanies the executable.

If distribution of executable or object code is made by offering access to copy from a designated place, then offering equivalent access to copy the source code from the same place counts as distribution of the source code, even though third parties are not compelled to copy the source along with the object code.

4. You may not copy, modify, sublicense, or distribute the Program except as expressly provided under this License. Any attempt otherwise to copy, modify, sublicense or distribute the Program is void, and will automatically terminate your rights under this License. However, parties who have received copies, or rights, from you under this License will not have their licenses terminated so long as such parties remain in full compliance.

5. You are not required to accept this License, since you have not signed it. However, nothing else grants you permission to modify or distribute the Program or its derivative works. These actions are prohibited by law if you do not accept this License. Therefore, by modifying or distributing the Program (or any work based on the Program), you indicate your acceptance of this License to do so, and all its terms and conditions for copying, distributing or modifying the Program or works based on it.

6. Each time you redistribute the Program (or any work based on the Program), the recipient automatically receives a license from the original licensor to copy, distribute or modify the Program subject to these terms and conditions. You may not impose any further restrictions on the recipients' exercise of the rights granted herein. You are not responsible for enforcing compliance by third parties to this License.

7. If, as a consequence of a court judgment or allegation of patent infringement or for any other reason (not limited to patent issues), conditions are imposed on you (whether by court order, agreement or otherwise) that contradict the conditions of this License, they do not excuse you from the conditions of this License. If you cannot distribute so as to satisfy simultaneously your obligations under this License and any other pertinent obligations, then as a consequence you may not distribute the Program at all. For example, if a patent license would not permit royalty-free redistribution of the Program by all those who receive copies directly or indirectly through you, then the only way you could satisfy both it and this License would be to refrain entirely from distribution of the Program.

If any portion of this section is held invalid or unenforceable under any particular circumstance, the balance of the section is intended to apply and the section as a whole is intended to apply in other circumstances.

It is not the purpose of this section to induce you to infringe any patents or other property right claims or to contest validity of any such claims; this section has the sole purpose of protecting the integrity of the free software distribution system, which is implemented by public license practices. Many people have made generous contributions to the wide range of software distributed through that system in reliance on consistent application of that system; it is up to the author/donor to decide if he or she is willing to distribute software through any other system and a licensee cannot impose that choice.

This section is intended to make thoroughly clear what is believed to be a consequence of the rest of this License.

8. If the distribution and/or use of the Program is restricted in certain countries either by patents or by copyrighted interfaces, the original copyright holder who places the Program under this License may add an explicit geographical distribution limitation excluding those countries, so that distribution is permitted only in or among countries not thus excluded. In such case, this License incorporates the limitation as if written in the body of this License.

9. The Free Software Foundation may publish revised and/or new versions of the General Public License from time to time. Such new versions will be similar in spirit to the present version, but may differ in detail to address new problems or concerns.

Each version is given a distinguishing version number. If the Program specifies a version number of this License which applies to it and "any later version", you have the option of following the terms and conditions either of that version or of any later version published by the Free Software Foundation. If the Program does not specify a version number of this License, you may choose any version ever published by the Free Software Foundation.

10. If you wish to incorporate parts of the Program into other free programs whose distribution conditions are different, write to the author to ask for permission. For software which is copyrighted by the Free Software Foundation, write to the Free Software Foundation; we sometimes make exceptions for this. Our decision will be guided by the two goals of preserving the free status of all derivatives of our free software and of promoting the sharing and reuse of software generally.

NO WARRANTY

11. BECAUSE THE PROGRAM IS LICENSED FREE OF CHARGE, THERE IS NO WARRANTY FOR THE PROGRAM, TO THE EXTENT PERMITTED BY APPLICABLE LAW. EXCEPT WHEN OTHERWISE STATED IN WRITING THE COPYRIGHT HOLDERS AND/OR OTHER PARTIES PROVIDE THE PROGRAM "AS IS" WITHOUT WARRANTY OF ANY KIND, EITHER EXPRESSED OR IMPLIED, INCLUDING, BUT NOT LIMITED TO, THE IMPLIED WARRANTIES OF MERCHANTABILITY AND FITNESS FOR A PARTICULAR PURPOSE. THE ENTIRE RISK AS TO THE QUALITY AND PERFORMANCE OF THE PROGRAM IS WITH YOU. SHOULD THE PROGRAM PROVE DEFECTIVE, YOU ASSUME THE COST OF ALL NECESSARY SERVICING, REPAIR OR CORRECTION.

12. IN NO EVENT UNLESS REQUIRED BY APPLICABLE LAW OR AGREED TO IN WRITING WILL ANY COPYRIGHT HOLDER, OR ANY OTHER PARTY WHO MAY MODIFY AND/OR REDISTRIBUTE THE PROGRAM AS PERMITTED ABOVE, BE LIABLE TO YOU FOR DAMAGES, INCLUDING ANY GENERAL, SPECIAL, INCIDENTAL OR CONSEQUENTIAL DAMAGES ARISING OUT OF THE USE OR INABILITY TO USE THE PROGRAM (INCLUDING BUT NOT LIMITED TO LOSS OF DATA OR DATA BEING RENDERED INACCURATE OR LOSSES SUSTAINED BY YOU OR THIRD PARTIES OR A FAILURE OF THE PROGRAM TO OPERATE WITH ANY OTHER PROGRAMS), EVEN IF SUCH HOLDER OR OTHER PARTY HAS BEEN ADVISED OF THE POSSIBILITY OF SUCH DAMAGES.

END OF TERMS AND CONDITIONS

How to Apply These Terms to Your New Programs

If you develop a new program, and you want it to be of the greatest possible use to the public, the best way to achieve this is to make it free software which everyone can redistribute and change under these terms.

To do so, attach the following notices to the program. It is safest to attach them to the start of each source file to most effectively convey the exclusion of warranty; and each file should have at least the "copyright" line and a pointer to where the full notice is found.

<one line to give the program's name and a brief idea of what it does.>
Copyright (C) <year> <name of author>

This program is free software; you can redistribute it and/or modify it under the terms of the GNU General Public License as published by the Free Software Foundation; either version 2 of the License, or (at your option) any later version.

This program is distributed in the hope that it will be useful, but WITHOUT ANY WARRANTY; without even the implied warranty of MERCHANTABILITY or FITNESS FOR A PARTICULAR PURPOSE. See the GNU General Public License for more details.

You should have received a copy of the GNU General Public License along with this program; if not, write to the Free Software Foundation, Inc., 51 Franklin St, Fifth Floor, Boston, MA 02110-1301 USA

Also add information on how to contact you by electronic and paper mail.

If the program is interactive, make it output a short notice like this when it starts in an interactive mode:

```
Gnomovision version 69, Copyright (C) year name of author
Gnomovision comes with ABSOLUTELY NO WARRANTY; for details type 'show w'.
This is free software, and you are welcome to redistribute it under certain conditions; type 'show c' for
details.
```

The hypothetical commands 'show w' and 'show c' should show the appropriate parts of the General Public License. Of course, the commands you use may be called something other than 'show w' and 'show c'; they could even be mouse-clicks or menu items--whatever suits your program.

You should also get your employer (if you work as a programmer) or your school, if any, to sign a "copyright disclaimer" for the program, if necessary. Here is a sample; alter the names:

```
Yoyodyne, Inc., hereby disclaims all copyright interest in the program 'Gnomovision' (which makes
passes at compilers) written by James Hacker.
```

```
<signature of Ty Coon>, 1 April 1989
Ty Coon, President of Vice
```

This General Public License does not permit incorporating your program into proprietary programs. If your program is a subroutine library, you may consider it more useful to permit linking proprietary applications with the library. If this is what you want to do, use the GNU Library General Public License instead of this License.